

## Portfolio Objective

The Unum Optimate Alternative investment strategy provides investment solutions tailored to specific risk profiles. Asset allocations are done with the aim of achieving the best risk adjusted return for the investor. This is done by diversification across traditional and alternative asset classes, as well as diversification within asset classes. We follow an active investment management approach to take advantage of opportunities that arise in the market and changes that occur in the economy. Our active approach is based on solid fundamental, as well as technical analysis.

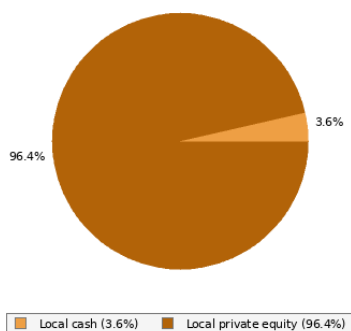
## Cumulative Trailing Returns<sup>2</sup>

	Portfolio	Benchmark
1 Month	1.33%	2.19%
3 Months	3.46%	6.34%
6 Months	6.68%	5.5%
12 Months	11.55%	13.72%
Since Inception	41.22%	46.25%

## Cumulative Returns



## Asset Allocation



Low	Low Medium	Medium	Medium High	High
-----	------------	--------	-------------	------

### Risk

### Peer Group

### Benchmark

### Inception Date

### Regulation 28 Compliant

### Investment Manager

### Management Fee

### Performance Fee

### Currency

### Liquidity<sup>1</sup>

High

Worldwide Multi-Asset  
Flexible

Worldwide Multi-Asset  
Flexible

30 April 2021

Yes

Unum Capital (FSP 564)

1,50%

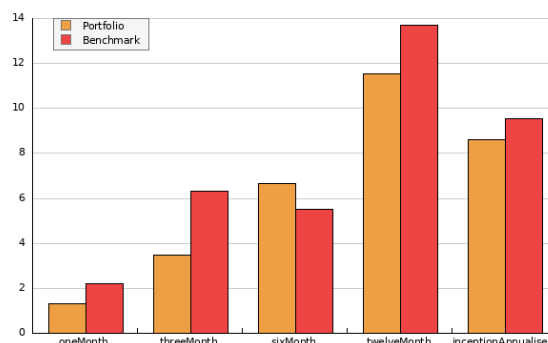
South African Rand

30 Day Notice Period

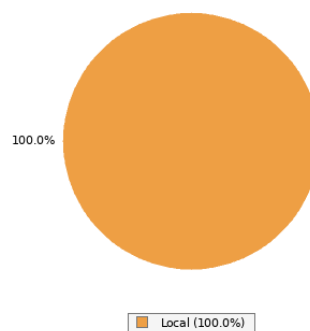
## Risk Metrics

	Portfolio	Benchmark
Max Drawdown	4.83%	16.32%
Standard Deviation	1.79%	8.6%

## Comparative Returns



## Regional Allocation



**Unum Capital**

Tel: 011 384 2900

Email: [clientsupport@unum.co.za](mailto:clientsupport@unum.co.za)

Website: <https://unum.capital>

## Monthly Returns <sup>3</sup>

		Jan	Feb	Mar	Apr	May	Jun	Jul	Aug	Sep	Oct	Nov	Dec	Total <sup>3</sup>
<b>2021</b>	Portfolio					0.09%	0.05%	0.37%	-0.10%	0.83%	1.56%	0.60%	2.39%	5.91%
	Benchmark					-2.18%	2.90%	1.89%	0.73%	-0.20%	3.67%	2.11%	1.92%	11.22%
<b>2022</b>	Portfolio	-1.97%	-0.42%	1.41%	0.05%	-0.61%	-1.14%	3.01%	0.57%	-1.85%	3.29%	1.76%	-1.55%	2.39%
	Benchmark	-5.76%	-0.95%	-2.13%	-0.49%	-1.46%	-3.03%	4.23%	0.16%	-3.44%	4.53%	1.01%	-1.10%	-8.57%
<b>2023</b>	Portfolio	3.97%	0.59%	-1.16%	2.00%	0.75%	1.26%	0.08%	0.51%	-1.05%	-1.63%	3.33%	1.30%	10.25%
	Benchmark	7.71%	1.14%	-1.41%	3.08%	3.13%	0.24%	-0.65%	1.72%	-2.95%	-3.07%	7.46%	2.08%	19.34%
<b>2024</b>	Portfolio	0.31%	0.80%	1.31%	1.01%	1.11%	1.22%	1.45%	1.07%	1.19%	1.30%	-1.69%	1.20%	10.73%
	Benchmark	1.10%	3.22%	1.06%	-1.04%	1.39%	0.14%	0.78%	0.73%	1.35%	0.42%	2.86%	1.43%	14.22%
<b>2025</b>	Portfolio	1.43%	0.64%	1.01%	1.02%	1.07%	1.33%							6.68%
	Benchmark	1.89%	-0.91%	-1.74%	1.94%	2.08%	2.19%							5.50%



## Disclaimer

Unum Capital (Pty) Ltd is an Authorised Financial Services Provider, License No. 564. ETF's and shares are medium to long term investments. The exposures indicated in the graphs may differ from time to time due to market movements, fund limitations and the portfolio manager's discretion. All information is product related, and is not intended to address the circumstances of any Financial Service Provider's (FSP) client. In terms of the Financial Advisory and Intermediary Services Act, FSP's should not provide advice to investors without appropriate risk analysis and after a thorough examination of a particular client's financial situation. The value of the portfolio may go down as well as up and past performance is not indicative of future performance. Fluctuations or movements in exchange rates may cause the value of the underlying international investments to go up or down. A full risk disclosure is available from Unum Capital. The information above is based on a backtested model portfolio, and excludes brokerage costs from trading.

## Notes

### <sup>1</sup> Liquidity

The Fund / Instrument may be illiquid and redemptions and withdrawals may require a written notice period.

### <sup>2</sup> Cumulative Trailing Returns

The Fund / Instrument performance over the specified time period. The annual return is calculated using:  $(\text{Ending Value} / \text{Beginning Value}) - 1$  This illustrates the annual return of an investor who was invested for the entire year.

### <sup>3</sup> Monthly Total Returns

The Fund / Instrument's annual return is the percentage change in the value of an investment over a one-year, calendar period. This return includes all sources of income, such as dividends, interest, and capital gains, and is compounded over the period. The annual return is calculated using:  $(\text{Ending Value} / \text{Beginning Value}) - 1$  This illustrates the annual return of an investor who was invested for the entire year.

